

# ZIPPERED POUCH

-STITCH SEW SHOP-

## SUPPLIES :

1/4 YARD EXTERIOR FABRIC

1/4 YARD INTERIOR FABRIC

1/4 YARD FUSIBLE FLEECE

1/2 YARD SF101

7IN ZIPPER

## STEP 1 : CUT PIECES (FOR EACH POUCH)

	EXTERIOR - CUT 2 RECTANGLES 9.25IN X 6.5IN
	INTERIOR - CUT 2 RECTANGLES 9.25IN X 6.5IN
	SF101 - CUT 2 RECTANGLES 9.25IN X 6.5IN
	FUSIBLE FLEECE - CUT 2 RECTANGLES 9.25IN X 6.5IN
	ZIPPER TABS - CUT 2 SQUARES 2IN X 2IN

## STEP 2 : FUSE INTERFACING

Using hot iron, fuse fleece to exterior rectangles and SF101 to interior rectangles.

Make sure glue side (rough side) of interfacing is on the wrong side of the fabric.

## STEP 3 : ZIPPER TABS

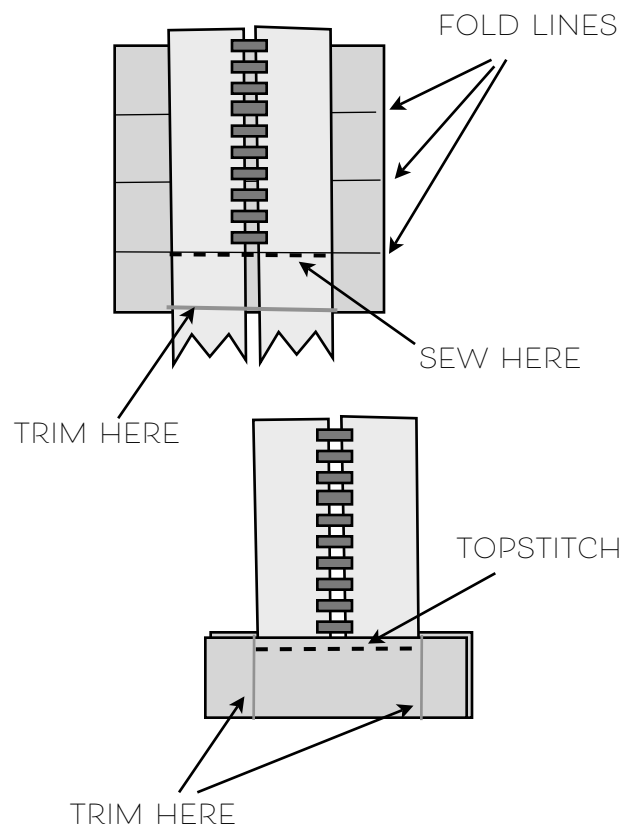
Fold zipper tabs in half and press.

Unfold and fold edges in to meet the middle pressed line; press again. The square should now have 3 fold lines evenly spaced.

Sew the right side of tab to the wrong side of the end of zipper tape, using one of the outside fold lines as a guide.

Sew as close to zipper stop as you can. Trim zipper tape and fold tab along fold lines to overlap end of tape. Folded edge should meet previous seam. Topstitch to right side of zipper tape. Trim tab to meet edges of zipper tape. (See illustration to the right.)

Repeat on other end of zipper.



#### STEP 4 : SEW ZIPPER TO LINING AND EXTERIOR

Using wonder tape to hold in place, attach zipper to 9in edge of one exterior piece. The right side of the zipper should be facing the right side of the fabric. Sew in place with zipper foot 1/4" from edge of zipper tape.

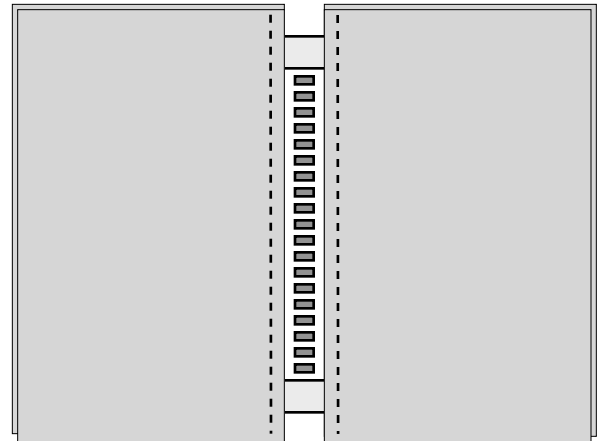
Turn over and attach zipper to lining 9in edge with wonder tape. Zipper should be sandwiched between the two rectangles (right sides of fabric facing each other and right side of zipper facing exterior.) Stitch along previous stitch line.

Repeat on other side of zipper with other two rectangles.

#### STEP 5 : TOPSTITCH

Press fabric with iron away from zipper on both sides. Topstitch 1/8" away from folded edge of fabric. (See illustration to the right.)

Make sure both layers are lying flat away from zipper. This improves the function of your zipper by keeping the fabric from catching as you zip.



#### STEP 6 : SEW SIDE SEAMS

Open zipper part way. Lay bag out with exterior fabrics right sides together and interiors right sides together. Pin or clip around. At zipper, match topstitching on exterior.

Mark a 2" no sew zone along one edge of lining. Sew around with 1/2" seam allowance, leaving the no sew zone open. Don't catch the zipper tabs in the seam.

#### STEP 7 : MAKE CORNERS

Cut off a 1" square from each corner of bag. (See illustration to the right.) Open out each corner and create a 3-d corner by matching side seam with bottom seam.

Sew with 1/2" seam allowance along the new edge you created. repeat this on each of the 4 corners (two exterior, two lining). Trim seam allowance to 1/4".

#### STEP 8 : TURN AND FINISH

Turn bag right side out through 2" no sew zone. Push out each corner.

Close no sew zone by edge-stitching along the folded edge of the opening. Insert lining into exterior through zipper.

Your bag is finished!

